

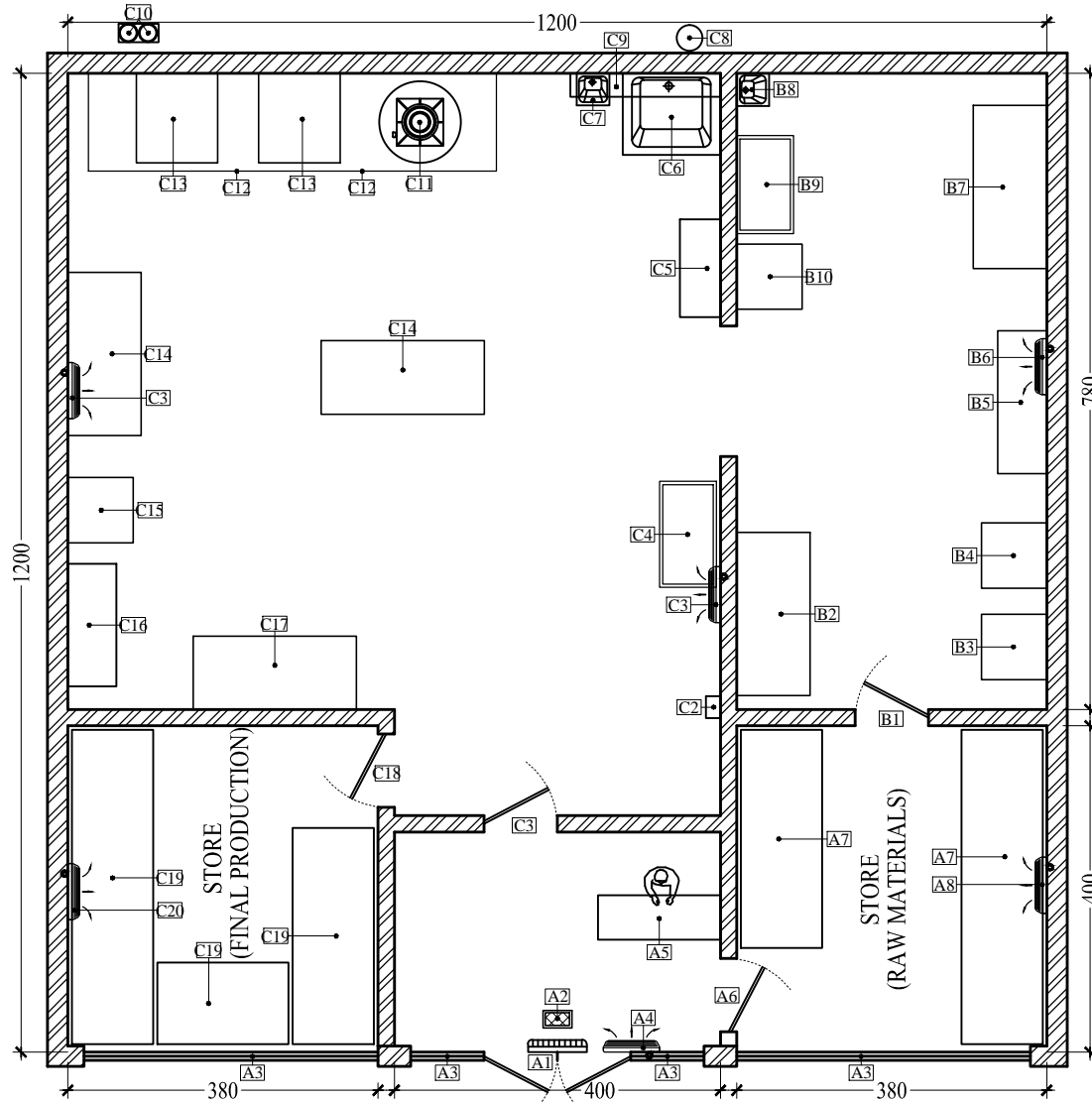
17 - SWEETS PREPARATION

PUBLIC HEALTH DEPARTMENT

RASAL KAIMAH,

PREPARATION AREA = 98.7 Sq.M / 1062.01 Sq.FT

TOTAL AREA = 144.00 Sq.M / 1549.44 Sq.FT



MODEL & STANDARD DESIGN OF SWEETS PREPARATION

LEGENDS

| | | |
|-------------------------|----------------------------------|--|
| ENTRANCE & STORE (A) | A1 | MAIN ENTRANCE WITH AIR CURTAIN |
| | A2 | INSECT KILLER |
| | A3 | FIXED GLASS |
| | A4 | SPLIT A/C |
| | A5 | CASH COUNTER WITH DELIVERY TABLE |
| | A6 | DOOR TO STORE (RAW MATERIALS) |
| | A7 | PALETTE FOR HOLDING RAW MATERIALS |
| | A8 | SPLIT A/C |
| PREPARATION AREA (B) | B1 | ENTRANCE TO PREPARATION AREA |
| | B2 | SERVICE TABLE |
| | B3 | DOUGH MIXER |
| | B4 | DOUGH GRINDER |
| | B5 | DOUGH SHEETER |
| | B6 | SPLIT A/C |
| | B7 | PREPARATION TABLE |
| | B8 | STAFF HAND WASH |
| | B9 | CHILLER FOR RELATED ITEMS |
| | B10 | SERVICE TROLLEY |
| PREPARATION AREA (C) | C1 | ENTRANCE TO PREPARATION AREA |
| | C2 | FIRST AID BOX |
| | C3 | SPLIT A/C |
| | C4 | FREEZER FOR RELATED ITEMS |
| | C5 | CHEMICAL STORE SHELVES |
| | C6 | EQUIPMENT WASH SINK |
| | C7 | STAFF HAND WASH |
| | C8 | WATER HEATER |
| | C9 | RACK FOR HOLDING ITEMS |
| | C10 | LPG CYLINDER |
| | C11 | GAS COOKING STOVE FOR SWEETS PREPARATION |
| | C12 | CHIMNEY HOOD WITH BLOWER EXHAUST FAN |
| C13 | OVEN | |
| C14 | PREPARATION TABLE | |
| C15 | SERVICE TROLLEY | |
| C16 | STAND FOR HOLDING ITEMS | |
| C17 | DELIVERY TABLE | |
| C18 | DOOR TO STORE (FINAL PRODUCTION) | |
| C19 | STAND FOR HOLDING ITEMS | |
| C20 | SPLIT A/C | |

THIS LAYOUT IS DESIGNED AS A STANDARD MODEL. IN CASE OF ANY DIMENSIONAL CHANGES, THE - DECISION WILL BE TAKEN AFTER RISK ASSESSMENT RELATED TO THE ACTIVITY AND OPERATION TYPE.