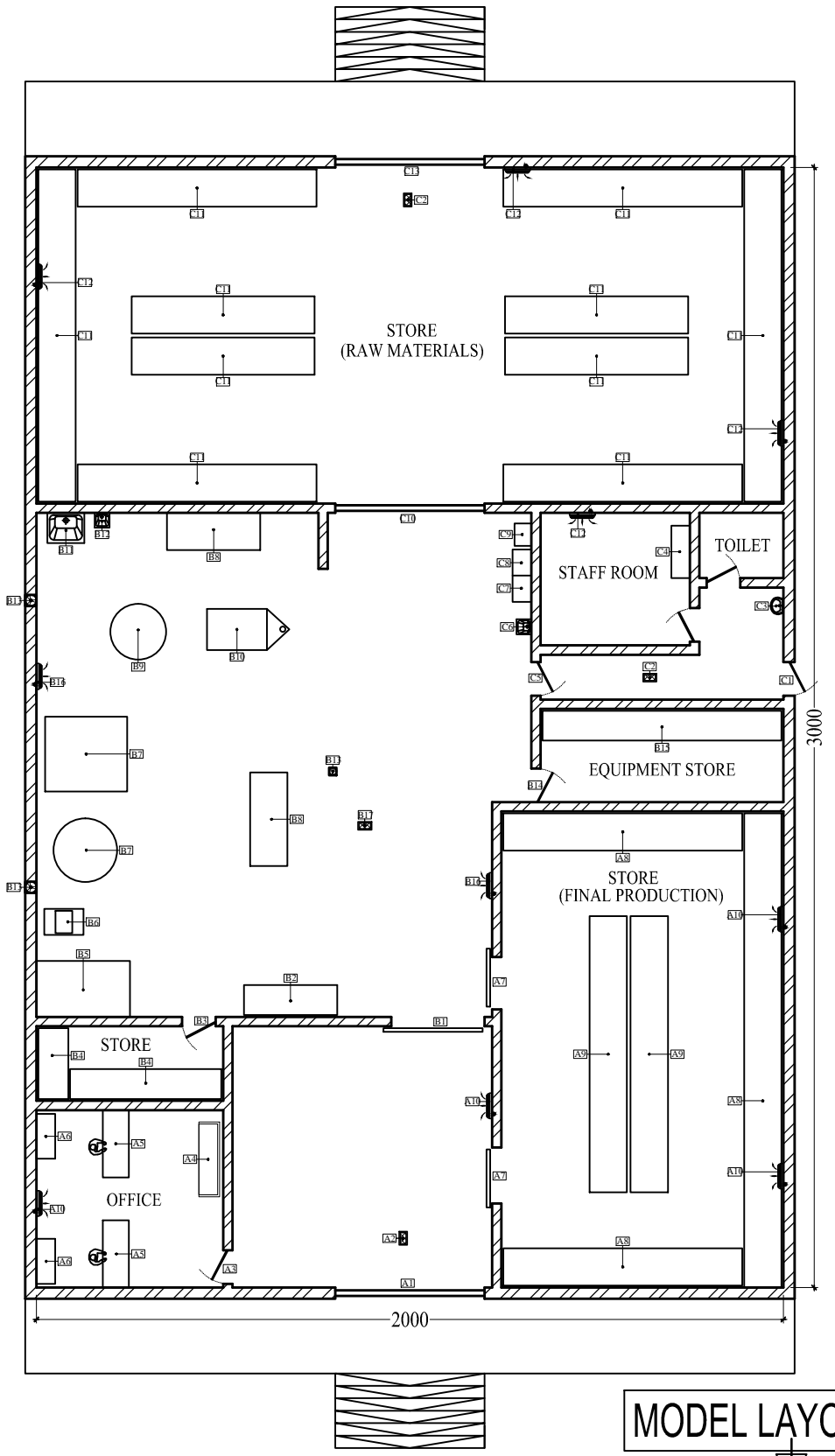


FEED FACTORY

PUBLIC HEALTH DEPARTMENT

RAS AL KAIMAH,
 TOTAL AREA = 600.00 Sq.M / 6456.00 Sq.FT

THE PROVIDED LAYOUT MODEL SERVES AS A -
 REFERENCE; ENSURE THE NEW LAYOUT -
 CONFORMS TO THE SPECIFIC PREMISE -
 DIMENSIONS AND REQUIREMENTS.



MODEL LAYOUT FOR FEED FACTORY

LEGENDS

OFFICE & STORE (A)	A1	LOADING AREA
	A2	INSECT KILLER
	A3	DOOR TO OFFICE
	A4	WAITING AREA
	A5	OFFICE TABLE
	A6	FILE CABINET
	A7	DOOR TO STORE (FINAL PRODUCTION)
	A8	STAND FOR HOLDING FINAL PRODUCTS
	A9	PALETTE FOR HOLDING FINAL PRODUCTS
	A10	SPLIT A/C
PRODUCTION AREA (B)	B1	ROLLING SHUTTER
	B2	STAND FOR HOLDING ITEMS
	B3	DOOR TO STORE (PACKING MATERIALS)
	B4	STAND FOR PACKING MATERIALS
	B5	PACKING TABLE
	B6	SEALING UNIT
	B7	PACKING MACHINE
	B8	SERVICE TABLE
	B9	SIEVE UNIT
	B10	SORTING UNIT
	B11	WATER OUTLET
	B12	NON HAND OPERATED HAND WASH
	B13	EXHAUST FAN
	B14	EQUIPMENT STORE
	B15	STAND FOR EQUIPMENT
	B16	SPLIT A/C
	B17	INSECT KILLER
STAFF ROOM & STORE (C)	C1	STAFF ENTRANCE
	C2	INSECT KILLER
	C3	HAND WASH
	C4	LOCKER FOR STAFF UNIFORM
	C5	DOOR PRODUCTIO AREA
	C6	NON HAND OPERATED HAND WASH
	C7	CHEMICAL STORE SHELVES
	C8	SANITATION LOCKER
	C9	FIRST AID BOX
	C10	ROLLING SHUTTER
	C11	STAND FOR HOLDING RAW MATERIALS
	C12	SPLIT A/C
	C13	UNLOADING AREA