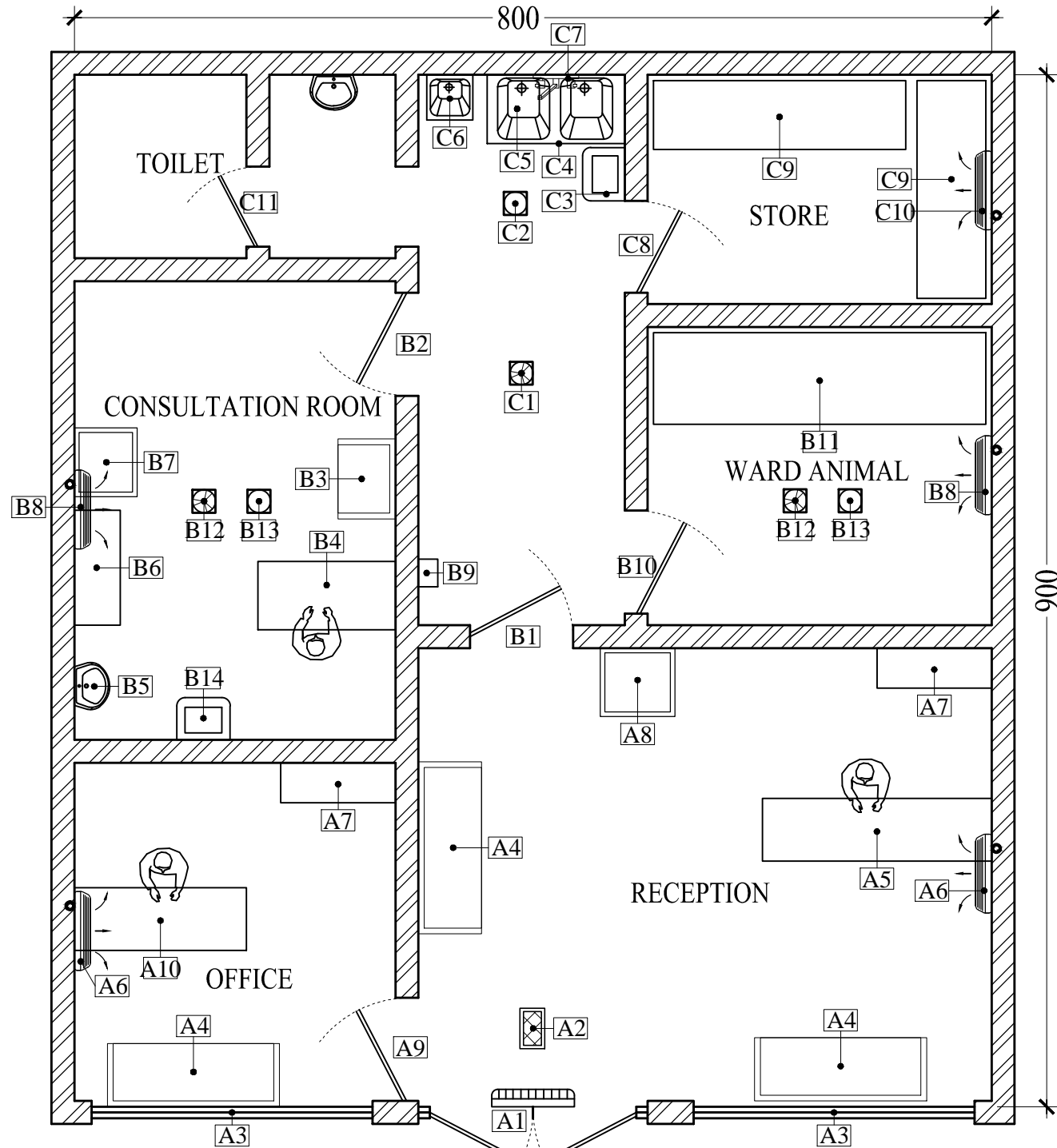


PRIMARY VETERINARY CLINIC

**PUBLIC HEALTH DEPARTMENT**

**RAS AL KAIMAH,**

TOTAL AREA = 72.00 Sq.M / 774.72 Sq.FT



MODEL LAYOUT FOR PRIMARY VETERINARY CLINIC

THE PROVIDED LAYOUT MODEL SERVES AS A - REFERENCE; ENSURE THE NEW LAYOUT - CONFORMS TO THE SPECIFIC PREMISE - DIMENSIONS AND REQUIREMENTS.

LEGENDS		
ENTRANCE & OFFICE (A)	A1	ENTRANCE WITH AIR CURTAIN
	A2	INSECT KILLER
	A3	FIXED GLASS
	A4	WAITING AREA
	A5	RECEPTION
	A6	SPLIT A/C
	A7	FILE CABINET
	A8	WATER DISPENSER
	A9	DOOR TO OFFICE
	A10	OFFICE TABLE
CONSULTATION & WARD ANIMAL (B)	B1	DOOR
	B2	DOOR TO CONSULTATION ROOM
	B3	WAITING AREA
	B4	CONSULTATION TABLE
	B5	NON HAND OPERATED HAND WASH
	B6	SHELVES FOR EQUIPMENTS
	B7	MEDICINE / VACCINE REFRIGERATOR
	B8	SPLIT A/C
	B9	FIRST AID BOX
	B10	DOOR TO WARD
GENERAL (C)	B11	CAGES
	B12	EXHAUST FAN
	B13	FLOOR GRATING
	B14	BIOMEDICAL WASTE BIN
	C1	EXHAUST FAN
	C2	FLOOR GRATING
	C3	GARBAGE BIN (WITH PEDAL & WHEELS)
	C4	EQUIPMENT WASH SINK
	C5	CHEMICAL STORE UNDER THE SINK
	C6	NON HAND OPERATED HAND WASH
	C7	HOT & COLD WATER SOURCE
C8	DOOR TO STORE	
C9	SHELVES FOR HOLDING ITEMS	
C10	SPLIT A/C	
C11	DOOR TO TOILET	