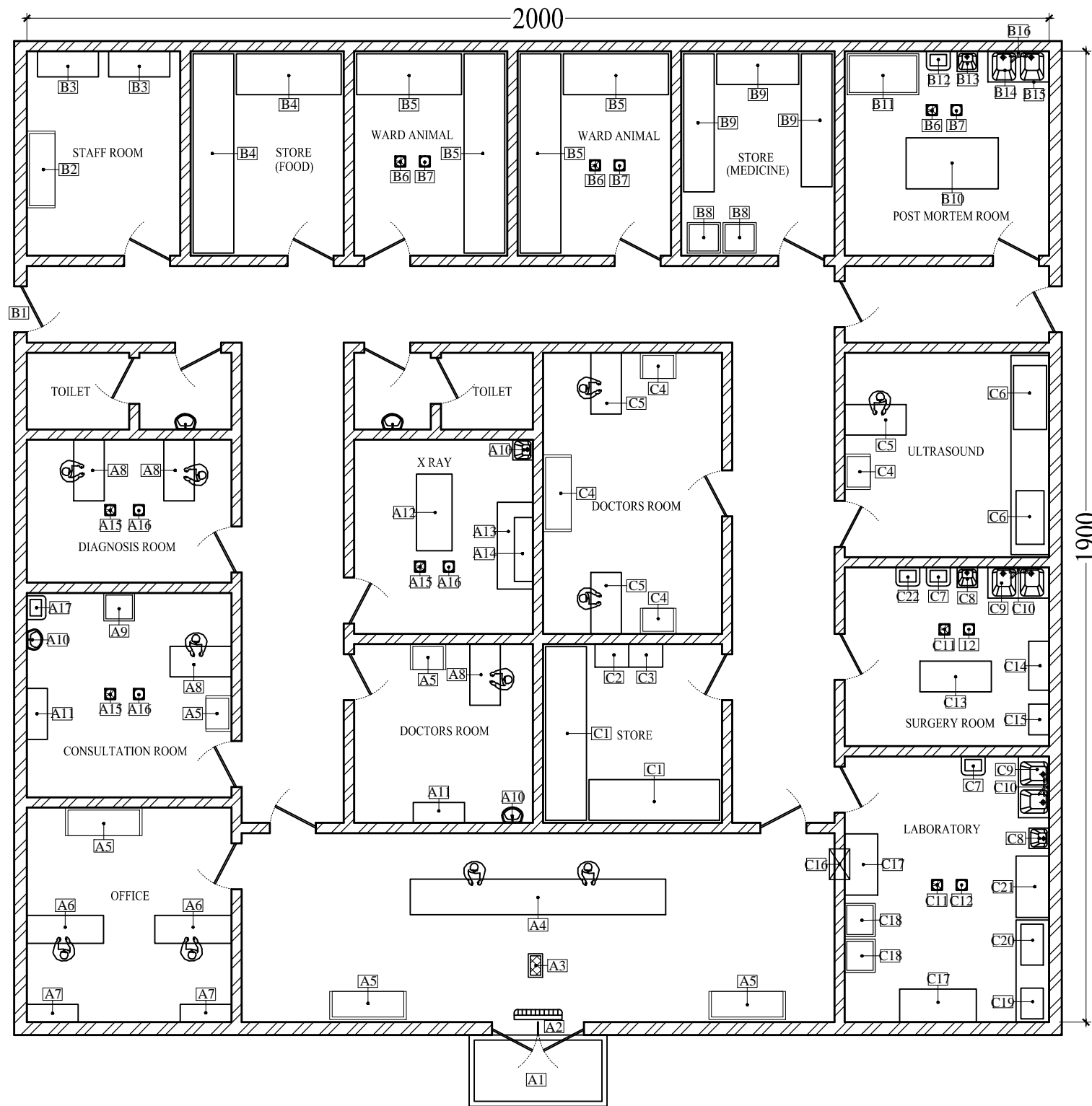


VETERINARY HOSPITAL

PUBLIC HEALTH DEPARTMENT

RAS AL KAIMAH,

TOTAL AREA = 380.00 Sq.M / 4088.80 Sq.FT



LEGENDS

A1	DISINFECTION AREA
A2	ENTRANCE WITH AIR - CURTAIN
A3	INSECT KILLER
A4	RECEPTION
A5	WAITING AREA
A6	OFFICE TABLE
A7	FILE CABINET
A8	DOCTORS TABLE
A9	MEDICINE / VACCINE - REFRIGERATOR
A10	NON HAND OPERATED - HAND WASH
A11	SHELVES FOR EQUIPMENTS
A12	X RAY
A13	SERVICE TABLE
A14	SHELVES FOR MATERIALS
A15	EXHAUST FAN
A16	FLOOR GRATING
A17	BIOMEDICAL WASTE BIN
B1	SERVICE EXIT
B2	WAITING AREA
B3	LOCKER
B4	STAND FOR HOLDING - ANIMAL FOOD
B5	CAGES
B6	EXHAUST FAN
B7	FLOOR GRATING
B8	MEDICINE / VACCINE - REFRIGERATOR
B9	SHELVES FOR MEDICINE
B10	POST MORTEM ROOM
B11	FREEZER
B12	GARBAGE BIN - (WITH PEDAL & WHEELS)
B13	NON HAND OPERATED - HAND WASH
B14	EQUIPMENT WASH SINK
B15	CHEMICAL STORE- UNDER THE SINK
B16	HOT & COLD WATER SOURCE

C1	STAND FOR HOLDING ITEMS
C2	CHEMICAL STORE SHELVES
C3	SANITATION LOCKER
C4	WAITING AREA
C5	DOCTORS TABLE
C6	ULTRASOUND SCANNER
C7	GARBAGE BIN - (WITH PEDAL & WHEELS)
C8	NON HAND OPERATED HAND WASH
C9	EQUIPMENT WASH SINK
C10	HOT & COLD WATER SOURCE
C11	EXHAUST FAN
C12	FLOOR GRATING
C13	SURGERY TABLE
C14	SHELVES FOR EQUIPMENTS
C15	SHELVES FOR EQUIPMENTS
C16	RECEIVING WINDOW
C17	LAB BENCHES
C18	REFRIGERATOR
C19	AUTOCLAVE MACHINE
C20	TESTING EQUIPMENTS
C21	COBAS MACHINE
C22	BIOMEDICAL WASTE BIN

THE PROVIDED LAYOUT MODEL - SERVES AS A REFERENCE; ENSURE - THE NEW LAYOUT CONFORMS TO - THE SPECIFIC PREMISE - DIMENSIONS AND REQUIREMENTS.

AIR CONDITION CENTRAL A/C SYSTEM

MODEL LAYOUT FOR VETERINARY HOSPITAL