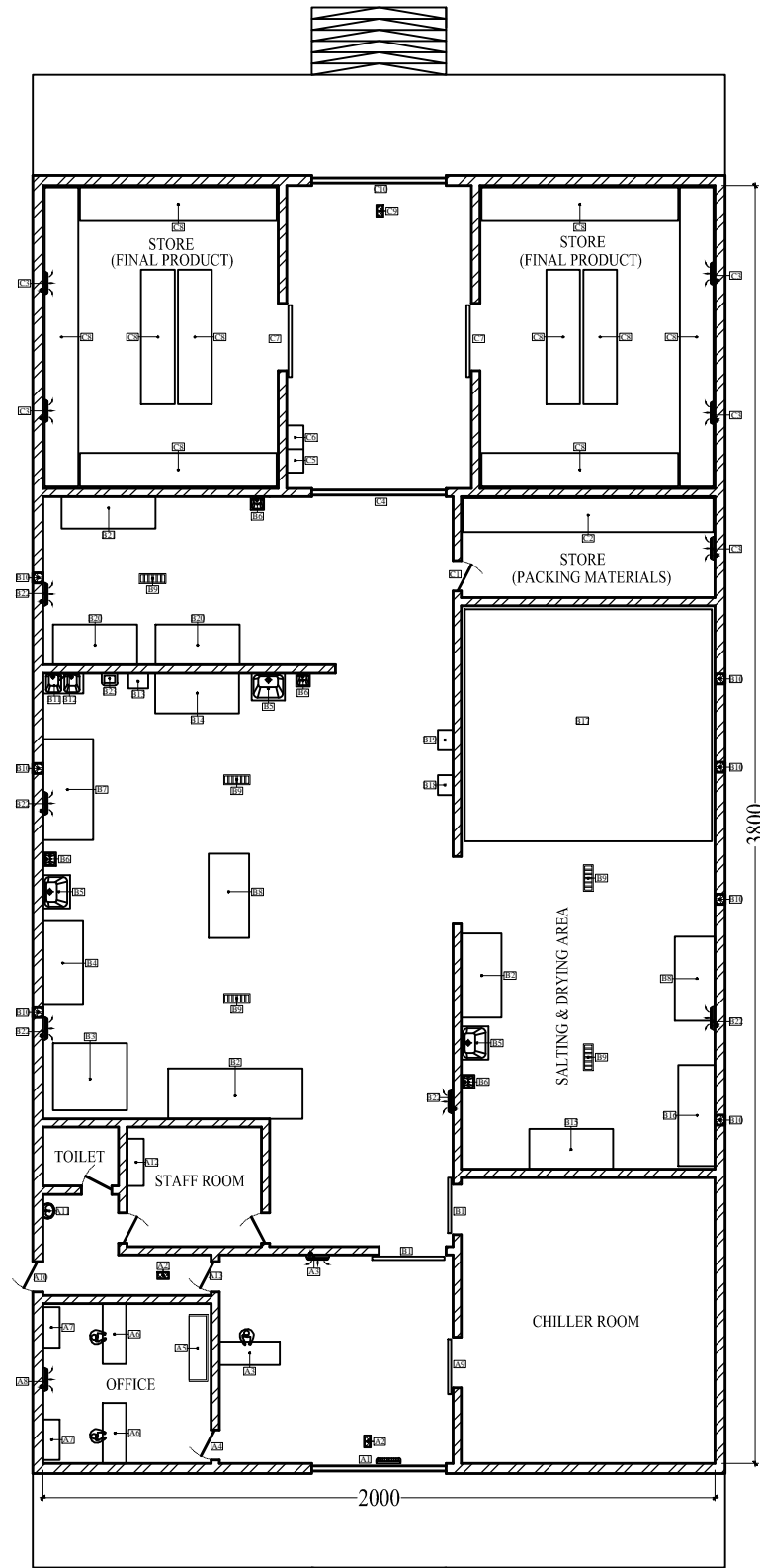


SALT FISH FACTORY

PUBLIC HEALTH DEPARTMENT

RAS AL KAIMAH,

TOTAL AREA = 360.0 Sq.M / 8177.60 Sq.FT



THE PROVIDED LAYOUT MODEL -
SERVES AS A REFERENCE; ENSURE -
THE NEW LAYOUT CONFORMS TO -
THE SPECIFIC PREMISE -
DIMENSIONS AND REQUIREMENTS.

MODEL LAYOUT FOR SALT FISH FACTORY

LEGENDS

OFFICE, STAFF ROOM & CHILLER ROOM	A1	RECEIVING AREA WITH AIR CURTAIN
	A2	INSECT KILLER
	A3	RECEPTION
	A4	DOOR TO OFFICE
	A5	WAITING AREA
	A6	OFFICE TABLE
	A7	FILE CABINET
	A8	SPLIT A/C
	A9	DOOR TO CHILLER ROOM
	A10	STAFF ENTRANCE
	A11	HAND WASH
	A12	LOCKER FOR STAFF UNIFORM
	A13	DOOR
PREPARATION AREA	B1	SLIDING DOOR
	B2	SORTING TABLE
	B3	ICE MACHINE
	B4	FISH CLEANING TABLE
	B5	FISH WASH SINK
	B6	NON HAND OPERATED HAND WASH
	B7	PACKING TABLE
	B8	SERVICE TABLE
	B9	FLOOR GRATING
	B10	EXHAUST FAN
	B11	EQUIPMENT WASH
	B12	HOT & COLD WATER SOURCE
	B13	STERILIZER (ARM LENGTH HEIGHT)
	B14	FISH CUTTING TABLE
	B15	FISH SALTING TABLE
	B16	STAND FOR HOLDING SALT
	B17	DRYING AREA
	B18	HOSE REEL
	B19	FIRST AID BOX
	B20	PACKING TABLE
	B21	STAND FOR HOLDING ITEMS
	B22	SPLIT A/C
	B23	GARBAGE BIN (WITH PEDAL & WHEELS)
STORE	C1	DOOR TO STORE (PACKING MATERIALS)
	C2	STAND FOR PACKING MATERIALS
	C3	SPLIT A/C
	C4	ROLLING SHUTTER
	C5	CHEMICAL STORE SHELVES
	C6	SANITATION LOCKER
	C7	DOOR TO STORE (FINAL PRODUCT)
	C8	STAND FOR FISH (FINAL PRODUCT)
	C9	INSECT KILLER
	C10	LOADING & UNLOADING AREA WITH AIR CURTAIN