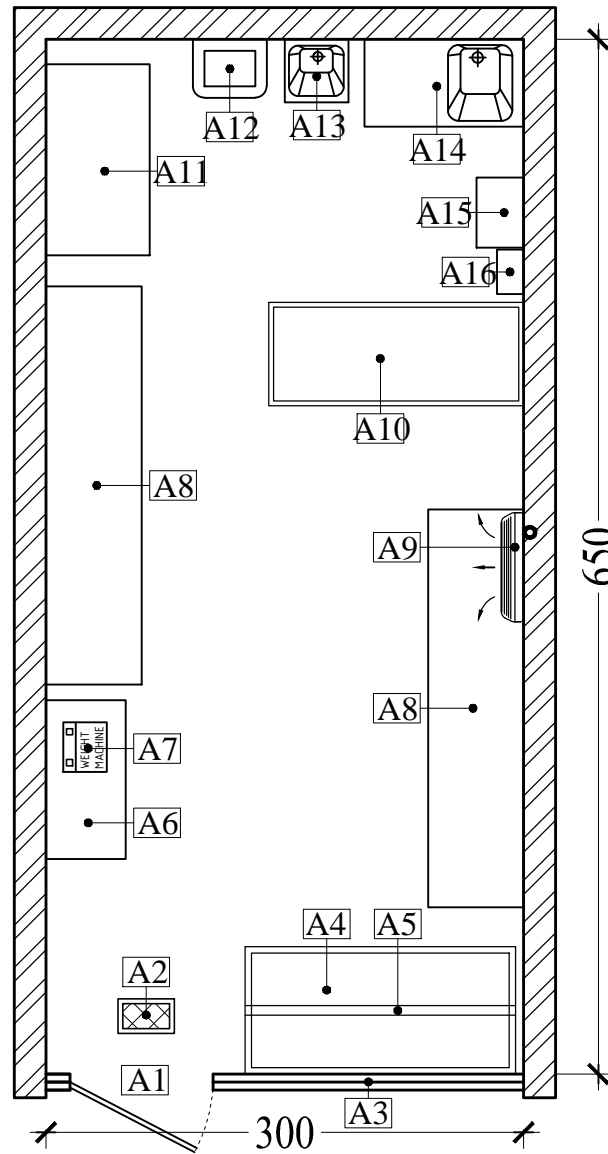


11 - VEGETABLES & FRUITS

PUBLIC HEALTH DEPARTMENT

RASAL KAIMAH, _____
 TOTAL AREA = 19.50 Sq.M / 209.82 Sq.FT



LEGENDS	
A1	ENTRANCE
A2	INSECT KILLER
A3	FIXED GLASS
A4	FRUITS DISPLAY BOX WITH STAND
A5	TOP LEVEL HANGING STAND FOR FRUITS
A6	CASH COUNTER WITH DELIVERY TABLE
A7	WEIGHING MACHINE
A8	DISPLAY STAND FOR VEGETABLES & FRUITS
A9	SPLIT A/C
A10	CHILLER FOR VEGETABLE & FRUITS
A11	STAND FOR HOLDING CARTOONS
A12	GARBAGE BIN
A13	STAFF HAND WASH
A14	VEGETABLE & FRUITS WASH SINK
A15	CHEMICAL STORE SHELF
A16	FIRST AID BOX

THIS LAYOUT IS DESIGNED AS A STANDARD MODEL. IN CASE OF ANY DIMENSIONAL CHANGES, THE DECISION WILL BE TAKEN AFTER RISK ASSESSMENT RELATED TO THE ACTIVITY AND OPERATION TYPE.

MODEL & STANDARD DESIGN OF VEGETABLES & FRUITS SHOP